

The Cover

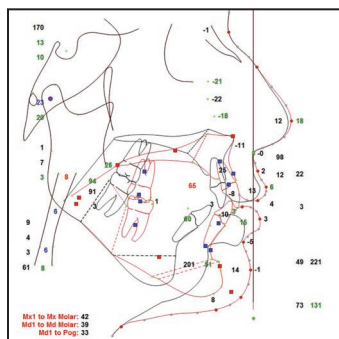
The miniscrew mechanics of Drs. Lin, Liou, and Bowman are illustrated on this month's cover.



171 Retroclined Teeth



190 Integrated Herbst



196 Esthetic Planning

DEPARTMENTS

The Editor's Corner . . . 137
 Continuing Education . . 181
 Product News 201
 Classified. 202
 Index of Advertisers . . . 203

Simultaneous Reduction in Vertical Dimension and Gummy Smile Using Miniscrew Anchorage

JAMES CHENG-YI LIN, DDS
 ERIC JEIN-WEIN LIOU, DDS, MSC
 S. JAY BOWMAN, DMD, MSD

The authors present skeletal-anchorage mechanics to simulate orthognathic treatment effects.

157

**CASE REPORT
 A Simple Method for Aligning Retroclined or Ectopic Teeth**

MAURO COZZANI, DDS, MSD
 LUCA LOMBARDO, DDS
 ANTONIO GRACCO, DDS
 GIUSEPPE SICILIANI, DDS

Severely misaligned teeth can be brought into the arch using self-ligating brackets and nickel titanium archwires.

171

**MANAGEMENT & MARKETING
 The Smile Questionnaire**

GERALD S. SAMSON, DDS
 JENNIFER G. FOGLE, DMD
 LYSLE E. JOHNSTON, JR., DDS, MS, PHD, FDS RCS
 S. JAY BOWMAN, DMD, MSD

This form elicits patient opinions on their appearance.

177

A Simplified Lingual Technique

LORENZO FRANCHI, DDS, PHD
 FABIO GIUNTOLI, DDS, MS
 ARTURO FORTINI, MD, DDS, MS
 BENITO PAOLO CHIODO, DDS, MS
 TIZIANO BACCETTI, DDS, PHD

The simplified appliance is especially useful in cases of mild-to-moderate anterior crowding or spacing.

183

An Improved Version of the Integrated Herbst Appliance

PAUL HÄGGLUND, DDS
 STAFFAN SEGERDAL, DDS

A new Herbst is less complex and more comfortable.

190

Esthetic Treatment Planning for Orthognathic Surgery

G. WILLIAM ARNETT, DDS
 MICHAEL J. GUNSON, DDS, MD

The authors describe their three-step analytical approach.

196

The opinions expressed in the *Journal of Clinical Orthodontics* are those of the writers and do not necessarily reflect the opinions and policies of JCO. Copyright © 2010 JCO, Inc. *Journal of Clinical Orthodontics* (USPS 802-120, ISSN 0022-3875) is published monthly for \$235 per year (U.S. individual rate) by JCO, Inc., 1828 Pearl St., Boulder, CO 80302-5519. Periodicals postage paid at Boulder, CO, and additional mailing office. POSTMASTER: Send address changes to JCO, 1828 Pearl St., Boulder, CO 80302-5519. Phone: (303) 443-1720; e-mail: info@jco-online.com.